

Our environmental approach

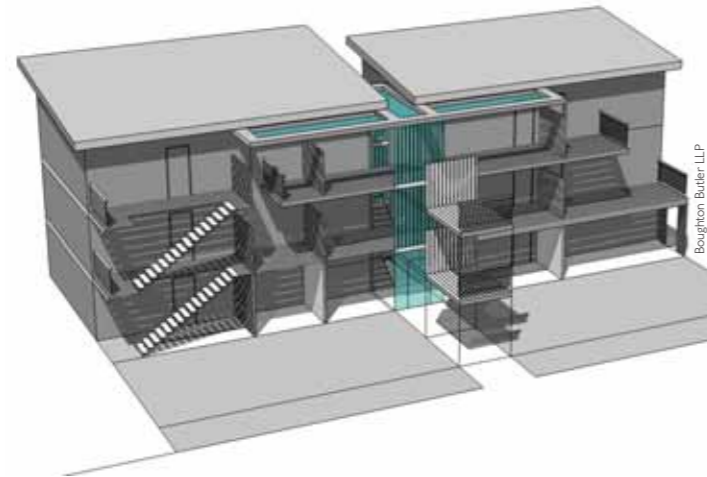
We support the Government's agenda to construct new homes in a sustainable way and are providing our customers with the opportunity to live in homes that have environmental and health benefits as well as reduced running costs.

To demonstrate this we are implementing a range of design, product and construction initiatives to show 'on the ground' commitment in this field. From planning through to build we already ensure that the environmental impact is minimised and valuable resources conserved.

It is our conviction that the homes we build using this approach are simply better than would otherwise be the case. The designs we use, the materials we select and our work on site are all of the highest quality.

Completed dwellings will perform well at the most fundamental level – providing durable and healthy homes which will have a significantly reduced impact on the environment. We place quality and craftsmanship at the heart of the process – as has been the case in the Kingerlee Group for five generations of the business.

Higher standards will be demanded by our future purchasers and Kingerlee Homes is well placed to meet them.



▼ Worcester Road, Droitwich Spa - a mixed-use scheme including over 50 homes in a variety of styles and sizes, again designed to Code Level 4.



▼ Bracken Hill, Leigh Woods, Bristol - a residential scheme to include the sensitive renovation of the main hall and other buildings in the grounds of the former Bristol University Botanic Gardens.

Current projects

▲ Park Road, Faringdon, Oxfordshire - a scheme of 18 apartments designed to achieve Code Level 4.



...and the route ahead?

There are many individuals and organisations involved in the building of today's new home – starting with those who have land and buildings for development. If you share our vision and have a passion for seeing high quality, sustainable new homes then talk to us.

Kingerlee Group

Other divisions in the Kingerlee Group are:

construction

from schools to private houses, churches to universities with values from £1 million to £15 million.

joinery

with one of the best equipped workshops in the country and offering bespoke quality joinery.

special projects

focussing on individual buildings, restoration and refurbishment up to £1 million in value.



Kingerlee Homes
Thomas House
Langford Locks
Kidlington
Oxfordshire
OX5 1HR

telephone
01865 840000

facsimile
01865 840045

email
homes@kingerlee.co.uk

website
www.kingerleehomes.co.uk



This leaflet is printed on Revive Uncoated which is made from 100% post consumer reclaimed material. The pulp is bleached using an Elemental Chlorine Free (ECF) process. This material can be disposed of by recycling, incineration for energy recovery, or is biodegradable. FSC 100% recycled product, supporting responsible use of forest resources. NAPM Approved Recycle grade. Produced at a mill that is certified to the ISO 14001 environmental standard. This leaflet is printed using vegetable based inks.

Kingerlee Homes

Creating sustainable homes, building to high environmental standards

We are on a journey...

Kingerlee Homes is part of a family owned business established in Oxford in 1868 and we have come a long way since then. Today in our approach to housebuilding and the environment we are ahead of many in the new homes market.

With increasing concern about global warming, Kingerlee Homes made the decision to build homes to much higher standards. Our first scheme at Bladon in Oxfordshire achieved the highest possible environmental standard, known as EcoHomes 'Excellent'. Not many in today's housing market can claim that. In fact we believe our scheme was the first to achieve this standard in Oxfordshire.



Chelsea Square, Cheltenham - An award winning conversion of Shaftesbury Hall, a Grade II Listed Building into apartments and town houses.

Going forward...

A new Government standard has now been introduced known as the 'Code for Sustainable Homes'. For the moment it is voluntary for the house builder but Kingerlee Homes is using its experience to build schemes that are planned to achieve Code Level 4.

We are a founder member of the Good Homes Alliance, an organisation set up to lead a major change in house building in the UK to meet the very serious challenge of global warming and resource depletion. As such we are committed to monitor the performance of new homes in terms of energy use and thermal performance over a two-year period. This is an innovative approach and one that separates us from the rest of the industry.

Our business plan focuses on the redevelopment of brownfield land, mixed-use schemes and the conversion of historic buildings.



Lechlade Manor, Gloucestershire - new homes in the form of a Georgian stable block and detached dwellings in the grounds of a Listed Building within a Conservation Area.



Nine houses at Bladon achieving EcoHomes Standard 'Excellent'

– the home of the future has been built at Bladon

These unique homes are built to the EcoHomes top rating of 'excellent', which assesses the project against a range of environmental criteria, its location and the construction materials used. How we have achieved this and the benefits to the purchaser are illustrated here.

Behind the fabric of the building is a new home in which at all stages through design to the choice of materials and finishes shows a commitment to a quality product. The scheme design reflects the character of its surroundings. Its construction is to the highest possible environmental standards.

It has been tested during the building process. We are confident with our claim that purchasers and the environment will benefit – these new homes will perform to the standards we have set.

